



Multi-conductor Transmission Line Model of Split-winding Transformer for Frequency Response and Disk-to-disk Fault Analysis

M. A. Sobouti^a, D. Azizian^{*b}, M. Bigdeli^a, G. B. Gharehpetian^c

^a Department of Electrical Engineering, Zanjan Branch, Islamic Azad University, Zanjan, Iran

^b Department of Electrical Engineering, Abhar Branch, Islamic Azad University, Abhar, Iran

^c Electrical Engineering Department, Amirkabir University of Technology, Tehran, Iran

PAPER INFO

Paper history:

Received 09 March 2020

Received in revised form 15 March 2021

Accepted 08 April 2021

Keywords:

Split-Winding Transformer

Multi-Conductor Transmission Line Model

Frequency Response Analysis

Short Circuit Fault

ABSTRACT

For transformer designers, split-winding transformer modeling in different frequency ranges is of great importance. In this paper, for the first time, a multi-conductor transmission line model is proposed for high-frequency modeling of the split-winding transformer. In this model, all the turns in layers and disks have been considered and the model's parameters have been calculated using the finite element method. In order to validate the proposed model, the results are compared with the result of a model, which is based on finite element and coupled field-circuit. It is shown that the introduced model has good accuracy and it can be employed for split-winding transformer modeling in different frequency ranges. In addition, using the validated multi-conductor transmission line model, the frequency response of the split-winding transformer and disk-to-disk short circuit fault are analyzed.

doi: 10.5829/ije.2021.34.06c.12

NOMENCLATURE

U and I	voltage and current	ϵ_0	the permittivity of free space
$R, L, C,$ and G	resistance, inductance, capacitance, and conductance	S	the conductor's cross-section
$[Z]$ and $[Y]$	impedance and inductance matrix	W_{ij}	the magnetic energy
$U_S(i)$ and $I_S(i)$	sending end voltage and current of i -th transmission line	B_i	The magnetic flux density
$U_R(i)$ and $I_R(i)$	receiving end voltage and current	Subscripts	
l	the average length of the line	FE	Finite element
Y_0	the characteristic admittance matrix of the model	MTL	Multi-conductor transmission line
A, J	the magnetic vector potential, current density	CC	correlation coefficient
μ	Permeability	FRA	Frequency Response Analysis
ρ	the volume charge density		

1. INTRODUCTION

Nowadays, transformers are employed in different applications and a transformer designer encounters several electromagnetic and insulating complex problems [1-2]. The growing trend in the use of traction systems has increased the need for different structures of multi-winding transformers.

In a transformer, impulse overvoltages can easily cause an insulation breakdown, internal short-circuits and mechanical displacement. The special structure of a

split-winding transformer may cause problems in insulating system design under different loading conditions. Investigating transformer response to different disturbances, and controlling these conditions can lead to high reliability in a traction network. Therefore, providing suitable models is important for analyzing the behavior of this type of transformers especially under high-frequency transients.

High-frequency transients have been studied in two-winding oil-immersed and dry-type transformers [3-7]. Model parameters and inductance matrix for two-

*Corresponding Author Institutional Email: d.azizian@abhariau.ac.ir

winding transformers have been calculated for different purposes based on analytical, finite element (FE) [8 - 13] and heuristic [14] methods.

Aghmasheh et al. have used the gray box modeling to study the transients in power transformer windings and its parameters have been obtained by applying the mathematical transfer function and the measured frequency response [15]. In literature, FE models have been employed to study high-frequency electromagnetic transients [16], frequency response [9, 17] and winding fault diagnosis [18]. Additionally, in order to model the behaviour of transformer, 2D and 3D FE models have been coupled to external electrical circuits in literature [19-20]. The coupled field-circuit approach has also been applied for high-frequency modeling of the transformer [17, 20, 21], in which the windings have been modeled as integrated blocks that can cause a considerable error in modeling the ohmic behaviour of windings .

The multi-conductor transmission line (MTL) model has been investigated in various papers to study the transient behavior of different transformers. Also, using the optimized MTL model, the partial discharge has been studied in power transformer windings [8, 22]. Jafari et al. have introduced a modified MTL model for partial discharge localization in power transformers [23]. Zhang et al. have investigated on the distribution of very fast transient overvoltages using an analytical model based on the MTL model and finite difference time domain approach [24]. The hybrid models, which are a combination of multi and single-transmission line models, have been introduced to simulate the transients responses of transformer windings in literature [25, 26]; these models significantly reduce the number of linear equations.

The electromagnetic and thermal behaviour of the split-winding transformer has been studied in [27, 28]. Some models based on equivalent circuit and coupled field-circuit approach have been previously proposed to simulate the low-frequency behaviour of the split-winding transformer [29, 30]. Additionally, research on the design optimization of the split-winding traction transformer has been presented under normal loading conditions [31].

For the split-winding transformer, novel models based on the coupled field-circuit approach and detailed model, have been introduced and validated for high-frequency analysis by Sobouti et al. [32]. The coupled field-circuit approach is very accurate, but it needs more computational time. Additionally, detailed model is a fast method but with lower accuracy.

In order to have an accurate and fast solution, in this paper, a new model based on MTL is introduced for split-winding transformer modeling. In all previous models, only simple layers and disks have been modeled in the split-winding traction transformer. But in this paper, all the turns in layers and disks of windings have been

considered and the model parameters per turns have been calculated using the FE method. The results are compared to a validated coupled field-circuit approach. It is shown that the introduced method has good accuracy and low computational time. Using the validated model, the frequency response of the split-winding transformer under normal and faulty conditions (disk-to-disk short-circuit fault) is studied. The obtained results show the higher capability of the proposed model against the older techniques

2. PROPOSED MODEL BASED ON MTL

One of the models that have been used to simulate the electromagnetic transients in transformer windings is the detailed model [32]. The validity of the detailed model depends on the accuracy of determining parameters, the number of model sections, and the selected error function. When a large number of sections are chased, although the validity ranges of the model can increase, it would be more difficult to find appropriate values for the parameters. This causes the model solution to become more time-consuming due to the larger dimensions of system equations. Thus, similar to many engineering problems, considering a compromise between modeling accuracy and calculation speed is important [33].

In the MTL model, each conductor of the winding is considered as a parallel transmission line, and all capacitive and inductive couplings are taken into account. By considering all the conductors and their lengths according to the technical specifications, the limitations of finite element models are eliminated. Thus, the validity of the model is higher than the detailed model [8].

The N -dimensional vectors of voltage and current of each distinct x -point located on each of n transmission lines could be formulated by the following wave equations:

$$\frac{\partial [u(x,t)]}{\partial x} = - \left([R][i(x,t)] + [L] \frac{\partial [i(x,t)]}{\partial t} \right) \quad (1)$$

$$\frac{\partial [i(x,t)]}{\partial x} = - \left([G][u(x,t)] + [C] \frac{\partial [u(x,t)]}{\partial t} \right) \quad (2)$$

where, u and i are the voltage and current vectors, respectively. In addition, R , L , C , and G are respectively the resistance, inductance, capacitance, and conductive matrices.

Because of symmetrical electrical parameters, the above equations in the frequency domain could be explained as follows [8]:

$$\frac{d^2 [u(x)]}{dx^2} = [Z][Y][u(x)] = [P]^2 [u(x)] \quad (3)$$

$$\frac{d^2 [i(x)]}{dx^2} = [Y][Z][i(x)] = ([P]^2)^T [i(x)] \quad (4)$$

where $[Z]$ and $[Y]$ are impedance and inductance matrix respectively [8].

Figure 1 shows the MTL model of the transformer winding.

The boundary conditions of the MTL model can be defined as follows:

$$U_R(i) = U_S(i + 1) \quad \text{For } i=1 \text{ to } i=N-1 \quad (5)$$

$$I_R(i) = -I_S(i + 1) \quad \text{For } i=1 \text{ to } i=N-1 \quad (6)$$

By solving the equations using the boundary conditions, it is possible to calculate the currents based on voltages (7):

$$\begin{bmatrix} I_S \\ I_R \end{bmatrix} = \begin{bmatrix} Y_0 \cdot \coth([p]l) & -Y_0 \cdot \operatorname{cosech}([p]l) \\ -Y_0 \cdot \operatorname{cosech}([p]l) & Y_0 \cdot \coth([p]l) \end{bmatrix} \cdot \begin{bmatrix} U_S \\ U_R \end{bmatrix} \quad (7)$$

where, $U_S(i)$ and $I_S(i)$ are sending end voltage and current of i -th transmission line, and $U_R(i)$ and $I_R(i)$ are its receiving end voltage and current, $[P]$ is the product of matrices Z and Y , l is the average length of the line and Y_0 is the characteristic admittance matrix of the model, which is obtained from the following relation:

$$Y_0 = [Z]^{-1} \cdot [P] \quad (8)$$

3. MTL PARAMETER CALCULATION

Figure 2 and Table 1 show the windings structure and Specifications of the dry-type split-winding transformer. The high voltage windings are paralleled to construct a single primary winding [27,32].

3. 1. FE Model

Three-phase electromagnetic modeling of a transformer is time-consuming and may be impossible, but it is acceptable to employ single-phase modeling [32].

The magnetic fields can be modeled using Poisson's equation, as follows:

$$\nabla^2 A - \mu \varepsilon \frac{\partial^2 A}{\partial t^2} = -\mu \cdot J, \quad (9)$$

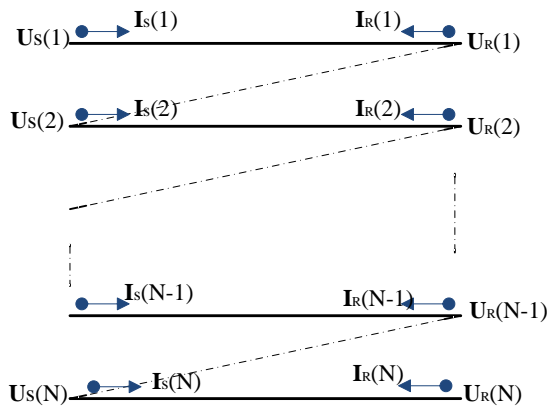


Figure 1. MTL Model

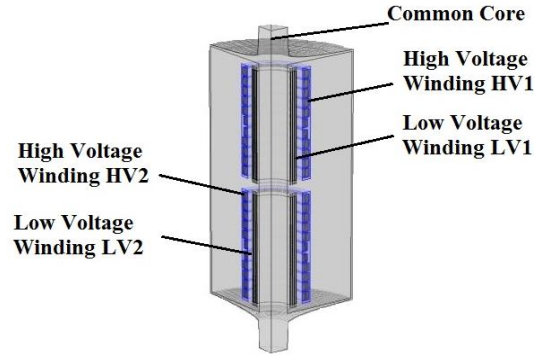


Figure 2. Single-phase view of a dry-type split-winding transformer

TABLE 1. Specifications of the transformer shown in Figure 2 [32].

	HV1	HV2	LV1	LV2
Rated power (MVA)	2	2	2	2
Line voltage (V)	20000	20000	750	750
Connection	D	D	y	D
Layer number	1	1	3	3
Axial channel (mm)	-	-	3*10	1*12
Disk number	11	11	1	1
Radial channel between disks (mm)	9*12 / 1*26	9*12 / 1*26	-	-
Turns	693	693	26	15
Height (mm)	1230	1230	1240	1240
Internal diameter (mm)	654	654	332	929
External diameter (mm)	799	799	454	982
Core diameter (mm)	320			
E _s (mm)	1015			
H _r (mm)	1410			

where, A , J , ε and μ , are the magnetic vector potential, current density, permittivity and permeability, respectively. Also, the fundamental postulate of electrostatics in free space specifies the divergence of E using Equation (10):

$$\nabla \cdot E = \frac{\rho}{\varepsilon_0}, \quad (10)$$

where ρ is the volume charge density and ε_0 is the permittivity of free space. In practical applications, the total field of an aggregate or a distribution of charges is usually calculated. The volume integral of both side of Equation (10) over an arbitrary volume V is given by Equation (11):

$$\int_V \nabla \cdot E \, dv = \frac{1}{\varepsilon_0} \int_V \rho \, dv. \quad (11)$$

Using the divergence theorem, we have [34]:

$$\oint_S E \cdot ds = \frac{Q}{\epsilon_0} \tag{12}$$

In this paper, the FE models are used to solve Poisson's equation and to obtain magnetic fields in different positions of transformer windings. Several FE models can be employed as introduced by Sobouti *et al.* [32]. In the present research, a 2D FE model with an equivalent core model is selected for the electromagnetic field calculations, and a 2D FE model with a simple core is selected for electrostatic computations [28].

3. 2. Winding Resistance Calculation The winding losses in the transformer consist of a DC and an eddy current losses. Using the calculated magnetic field, the current and losses distribution in windings and consequently windings resistances can be calculated.

In this paper, winding losses and resistances are computed based on a semi-analytical method [32]. This quasi-numerical method employs the FE method to calculate the magnetic field distribution, and an analytical method to determine the windings losses per windings part. The obtained results are shown in Figures 3 and 4 for typical traction transformer specifications [29].

Note that the winding ohmic resistance increases with an increase in the frequency as described in literature [35, 36].

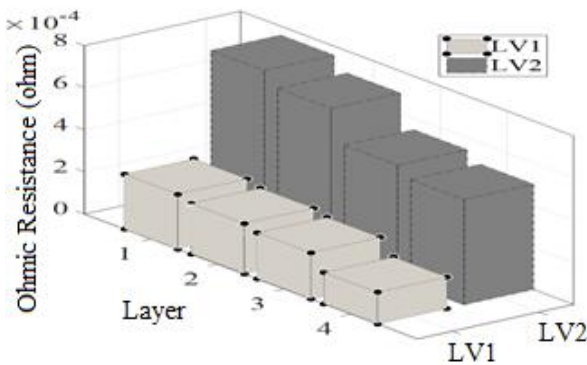


Figure 3. LV windings ohmic resistances (Ω)

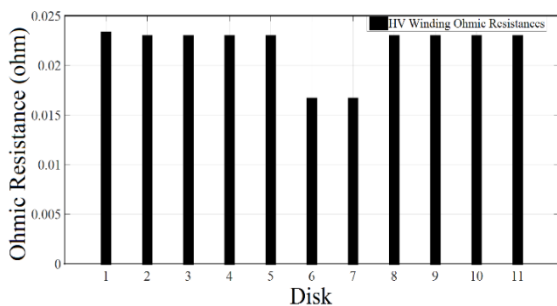


Figure 4. HV windings ohmic resistances (Ω).

3. 3. Winding Capacitors Calculation In multi-winding traction transformer modeling, the capacitances between LV and HV winding turns should be calculated in the MTL model. In this paper, the FE method has been used to calculate these capacitors. To reduce the calculation burden, a method based on FE and electrical charge calculation of each conductor is utilized to calculate capacitances [32]. Figure 5 shows electric potential (V) and electric field while the capacitances have been calculated.

Employing voltage V_i to i -th conductor (and setting the others to zero), the electric field can be calculated using the electrostatic analysis, and the electric charge on each conductor can be calculated using Equation (13) [6, 9, 10]:

$$Q = (\epsilon_r \cdot \epsilon_0) \frac{S}{d} V_i \tag{13}$$

where S is the conductor's cross-section, ϵ_0 and ϵ_r are free space and relative permittivity, respectively and d is the distance between conductors. Now, by calculating the electrical charges of all the conductors and forming the vector Q , the column i of the matrix C can be obtained as follows:

$$[C_{1i}, C_{2i}, \dots, C_{ni}]^T = Q/V_i \tag{14}$$

Because of the change in behavior of the electrical potential and flux distributions, studying short circuits in layers or disks is important. In the past, ohmic resistance changes have been used to detect short circuits. In this paper, capacitors are computed in both normal and faulty conditions. A fault condition in a disk or a layer can be

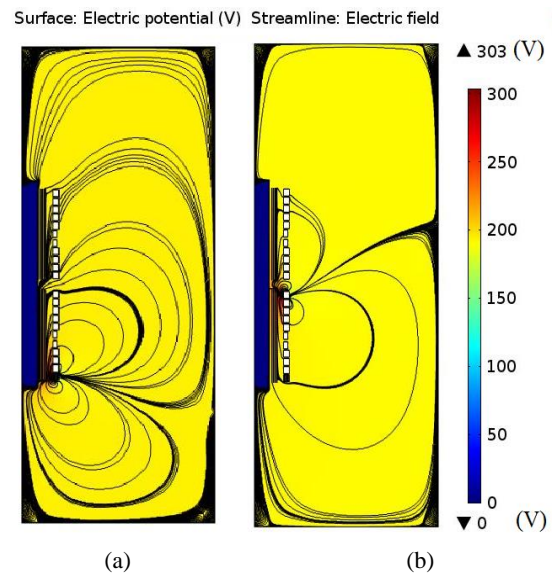


Figure 5. Electric potential and electric field distribution while the capacitances between (a) Eleventh and Tenth disks of HV₁ and (b) first and second disks of HV₁ have been simulated

modeled by short-circuiting a number of turns with very low resistance. Figures 6-7 show the calculated capacitances in the normal and faulty conditions.

By comparing the results in Figures 6 and 7, it can be seen that the capacitance values decrease due to the short circuit of the layers and disks.

3. 4. Winding Inductances Calculation using Electromagnetic Field Modelling

The calculation of inductive parameters includes the determination of mutual and self-inductances that are very important for impulse voltage distribution and frequency response analysis. In this paper, the energy method is used to calculate the winding inductances.

The magnetic energy can be calculated using Equation (15) by which two conductors are coupled [8, 28]:

$$W_{i,j} = \frac{1}{2} \int_{vol} B_i \cdot H_j dv \tag{15}$$

where, B_i is resulting magnetic flux density due to i -th conductor, and H_j is resulting magnetic field due to j -th conductor.

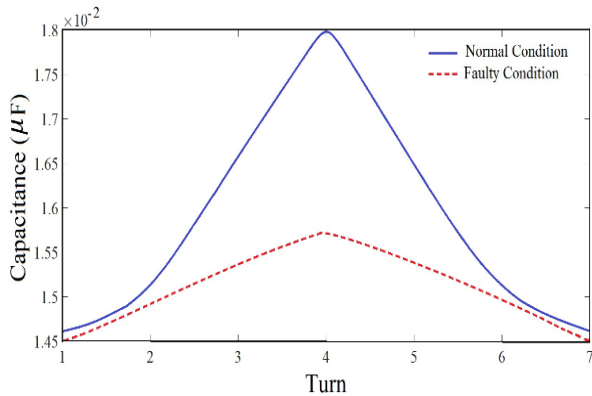


Figure 6. The first layer of LV₁ winding capacitors (F) in normal and faulty conditions

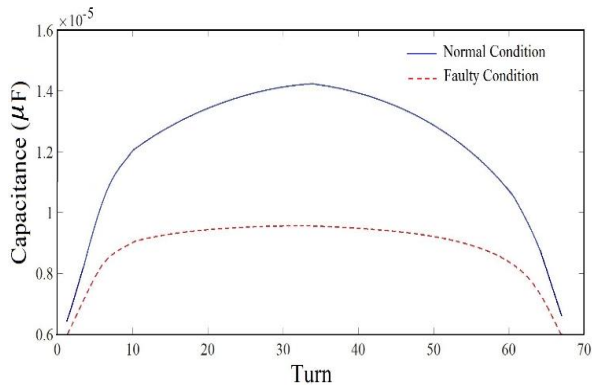


Figure 7. The first disk of HV₁ winding capacitors (F) in normal and faulty conditions

By employing currents I_i and I_j to a pair of intended windings and calculating the magnetic energy (W_{ij}), the mutual inductance between them is calculated using Equation (16) [8, 28]:

$$L_{ij} = \frac{2W_{ij}}{I_i I_j} \tag{16}$$

In addition, the self-inductance can be calculated by the following equation [8]:

$$L_{ii} = \frac{2W_{ii}}{I_i^2} \tag{17}$$

As presented in literature [32, 37], the winding inductances decrease exponentially with an increase in the frequency.

The inductances per turn for the first disk of HV₁ and the fourth layer of LV₁ in two different frequencies and under normal and short-circuit conditions are shown in Figures 8 and 9, respectively. Figure 10 shows the magnetic flux density distribution in normal and faulty conditions.

As can be seen in Figures 8 and 9, the inductance values increase as a result of the short-circuit condition. Therefore, calculated parameters have been used in the

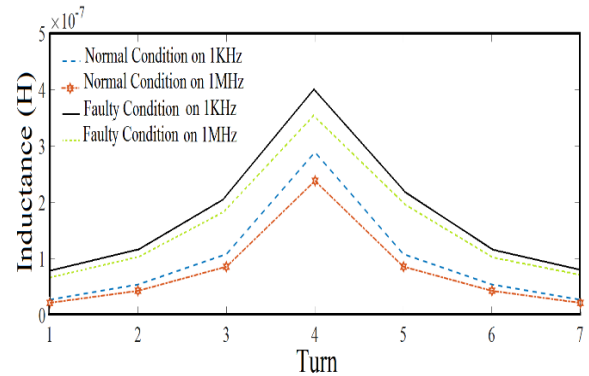


Figure 8. Inductance per turn for the fourth layer of LV₁ at 1 kHz and 1 MHz

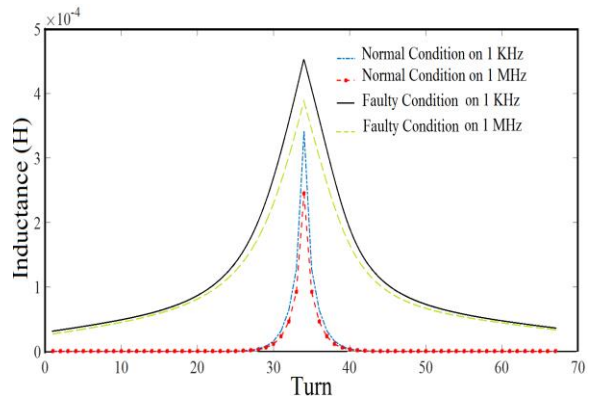


Figure 9. Inductance per turn for the first disk of HV₁ at 1 kHz and 1 MHz

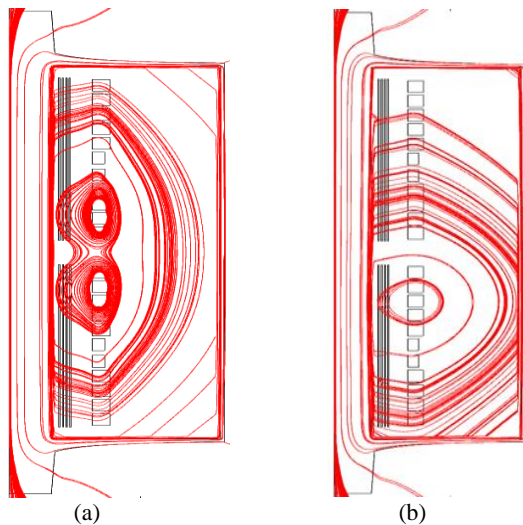


Figure 10. Flux density distribution under normal loading condition: (a) normal condition and (b) fault in sample disk

MTL model and the frequency response of the split-winding transformer and disk-to-disk short circuit fault are analyzed. Figure 11 shows the flowchart of the general procedure for the current research.

4. SIMULATION RESULTS

The detailed 3D FE model with full consideration of both electromagnetic and electrostatic phenomena is the most accurate method. But, the detailed modeling of all layers and disks in the 3D model is very time-consuming, and due to the restrictions in computer hardware, it may be impossible [28, 29]. Thus, a designer may be forced to simplify the windings structure in the 3D model. This approach causes an error in high-frequency analysis. For the same structure modeling, the 3D FE model has higher accuracy. Thus, the 2D FE results are validated versus the 3D FE model with a simplified structure of the split-winding transformer as shown by Sobouti et al. [32]. In addition, the simulation time in the 2D FE model is less than the 3D model with sufficient accuracy. Therefore, a 2D model with an equivalent core can be used to model the split-winding transformer with a complete geometry for high and low-frequency electromagnetic transients studies.

To increase the accuracy in the 2D model, the 2D coupled field-circuit method has been used to model the split-winding transformer. As shown by Sobouti et al. [32], the resonant frequencies are acceptable while they are compared to the FE models. Therefore, the coupled field-circuit approach can model the transformer behavior during transients more accurately.

Also, in this paper, the MTL model is simulated using the electrical parameters determined in Section 3 in normal and faulty conditions. In this model, all the

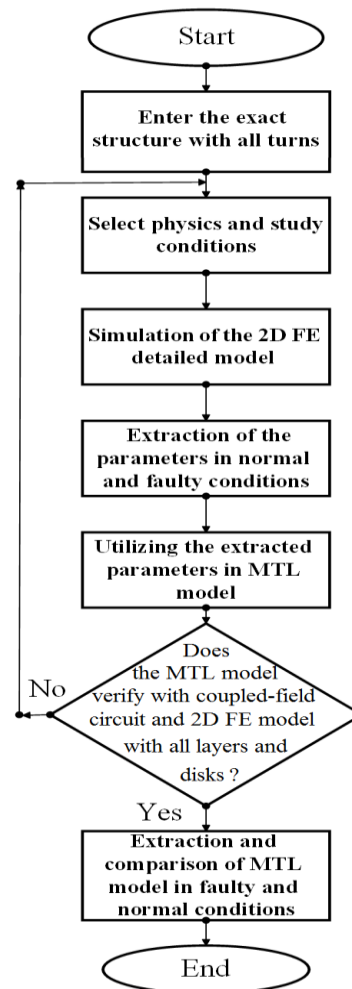


Figure 11. Flowchart for the general process of this article

conductors of the disks and layers and their average length are modeled according to the technical specifications, and validated with the FE and the coupled field-circuit method. To obtain the frequency response of the transformer, an impulse voltage is applied to the transformer input terminals (HV) and the output impulse response is obtained (LV₁ windings). Then, by dividing the output signal to the input signal and using the fast Fourier transform, the transfer function (TF) is obtained in the frequency domain [16]. Figures 12 and 13 show the results of the voltage distribution of the high-frequency MTL model in HV disks, the comparison of the results of the MTL model with the 2D FE, and the coupled-field circuit model in normal conditions. This comparison shows that the proposed method is able to model the high-frequency transient behavior of the split-winding transformer in normal conditions.

After short-circuiting the eleventh and tenth disks of the HV₁ winding, the frequency response is determined. Figure 14 shows the difference of resonant frequencies in the MTL model in faulty conditions.

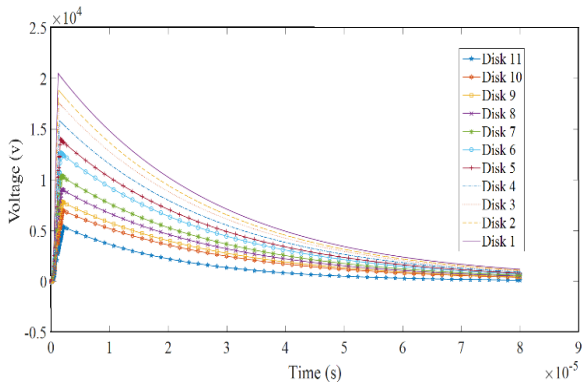


Figure 12. Voltage distribution of high-frequency MTL Model in normal condition

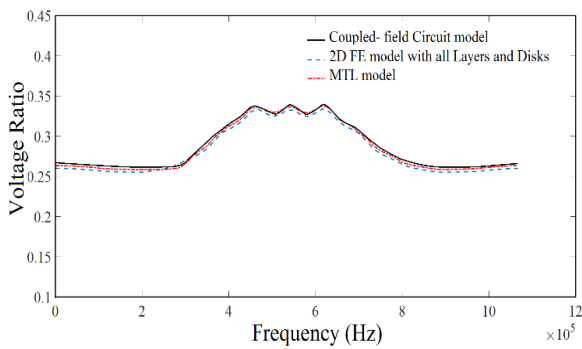


Figure 13. Comparison of MTL model with 2D FE and coupled-field circuit model in Normal condition

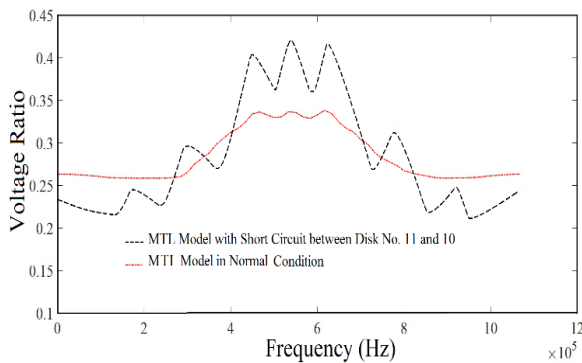


Figure 14. Comparison of MTL model in faulty and normal conditions

The data gathered in this figure can be employed for fault diagnosis of transformer winding. For this purpose, the IEEE standard [38] introduces a proper index based on correlation coefficient (CC). This index is defined as follows:

$$CC = \frac{\sum_{i=1}^N X(i)Y(i)}{\sqrt{\sum_{i=1}^N [X(i)]^2 \sum_{i=1}^N [Y(i)]^2}} \quad (18)$$

where, X and Y denote the healthy and the faulty conditions, and N is the number of the dataset.

As it was mentioned in literature [38], a value smaller than 0.9996 for CC means that a faulty condition is occurred. By applying Equation (18) to different disk-to-disk fault conditions such as the data presented in Fig. 14, it is seen that the CC has a value between 0.6 and 0.95. Thus, the introduced high-frequency MTL model is an efficient (fast and accurate) method for using in frequency response analysis of transformer due to different fault conditions.

5. CONCLUSIONS

In this paper, the transient behaviour of the split-winding traction transformer has been studied at high frequencies in faulty and normal conditions using an MTL model. Given that modeling all turns of disks and layers in the windings is not possible in 3D models, the 2D FE models with detailed modeling of windings was introduced to model the electromagnetic transients more accurately. In the proposed model, all the conductors of the disks and layers and their average length have been modeled. The 2D and coupled-field circuit models have been used to model and validate the transient electromagnetic behaviour of the split-winding traction transformer in the frequency domain, and the accuracy of the methods has been confirmed. It has been discussed that the MTL model not only is fast and simple, but also can be employed to model high-frequency transient behaviour of split-winding traction transformers with much higher accuracy compared to the detailed model. In addition, its frequency range has been increased compared to the detailed model. Also, it has been shown that the FRA result of transformer winding for each short-circuit fault is different from others.

6. REFERENCES

1. Akbari, M., Yavari, M., Nemati, N., Babae, D. J, Molavi, H., Asefi, M., "An Investigation on Stability, Electrical and Thermal Characteristics of Transformer Insulating Oil Nanofluids", *International Journal of Engineering, Transactions A: Basics*, Vol. 29, No. 10, (2016), 1332-1340. doi: 10.5829/idosi.ije.2016.29.10a.02
2. Siahkolah, B., Faiz, J., "Effect of solid-State on Load Distribution Transformer Tap-Changer on Power Quality Enhancement", *International Journal of Engineering, Transactions B: Applications*, Vol. 17, No. 2, (2004), 141-154.
3. Bigdeli, M., Vakilian, M., Rahimpour, E., "Transformer winding faults classification based on transfer function analysis by support vector machine" *IET Electric Power Applications*, Vol. 6, No. 5, (2012), 268-276. doi: 10.1049/iet-epa.2011.0232
4. Ganji, M., Bigdeli, M., Azizian, D., "Mitigation Transformer Inrush Current Using Modified Transient Current Limiter", *International Journal of Engineering, Transactions B: Applications*, Vol. 32, No. 5, (2019), 701-709. doi: 10.5829/ije.2019.32.05b.12.

5. Bigdeli, M., Rahimpour, E., and Khatibi, M., "Transient-state Modelling of distribution transformers", *International Review on Modelling and Simulations*, Vol. 4, No. 1, (2011), 295-302.
6. Eslamian, M., Vahidi, B., and Hosseinian, S. H., "Transient simulation of cast-resin dry-type transformers using FEM", *European Transactions on Electrical Power*, Vol. 21, No. 1, (2011), 363-379. doi: 10.1002/etep.447.
7. Eslamian, M. and Vahidi, B., "New Equivalent Circuit of Transformer Winding for the Calculation of Resonance Transients Considering Frequency-Dependent Losses", *IEEE Transactions on Power Delivery*, Vol. 30, No. 4, (2015), 1743-1751. doi: 10.1109/TPWRD.2014.2361761.
8. Hosseini, S. M., Rezaei Baravati, P., "New High Frequency Multi-conductor Transmission Line Detailed Model of Transformer Winding for PD Study", *IEEE Transactions on Dielectrics and Electrical Insulation*, Vol. 24, No. 1, (2017), 316-323. doi: 10.1109/TDEI.2016.005694.
9. Eslamian, M., Vahidi, B., and Hosseinian, S. H., "Analytical calculation of detailed model parameters of cast resin dry-type transformers", *Energy Conversion and Management*, Vol. 52, No. 7, (2011), 2565-2574. doi:10.1016/j.enconman.2011.01.011
10. Eslamian, M., Vahidi, B., and Hosseinian, S. H., "Combined analytical and FEM methods for parameters calculation of detailed model for dry-type transformer", *Simulation, Modelling Practice and Theory*, Vol. 18, No. 3, (2010), 390-403. doi: 10.1016/j.simpat.2009.12.005.
11. Eslamian, M., Vahidi, B., "New Methods for Computation of the Inductance Matrix of Transformer Windings for Very Fast Transients Studies", *IEEE Transactions on Power Delivery*, Vol. 27, No. 4, (2012), 2326-2333. doi: 10.1109/TPWRD.2012.2204905.
12. Eslamian, M. and Vahidi, B., "Computation of Self-impedance and Mutual Impedance of Transformer Winding Considering the Frequency-dependent Losses of the Iron Core", *Electric Power Components and Systems*, (2016), 1236-1247. doi: 10.1080/15325008.2016.1157111
13. Faiz, J., Naderian Jahromi, A., Mohseni, H., "A Fast Method for Calculation of Transformers Leakage Reactance Using Energy Technique", *International Journal of Engineering, Transactions B: Applications*, Vol. 16, No. 1, (2003), 41-48.
14. Bigdeli, M. and Valii, M., Azizian, D., "Applying Intelligent Optimization Algorithms for Evaluation of Transformer Black Box Model," 6th International Conference on Soft Computing Applications, Timisoara, Romania, (2014). doi: 10.1007/978-3-319-18416-6_102
15. Aghmasheh, R., Rashtchi, V., and Rahimpour, E., "Gray Box Modelling of Power Transformer Windings for Transient Studies", *IEEE Transactions on Power Delivery*, Vol. 32, (2017), 2350- 2359. doi: 10.1109/TPWRD.2017.2649484
16. Gunawardana, M., Fattal, F., Kordi, B., "Very Fast Transient Analysis of Transformer Winding Using Axial Multiconductor Transmission Line Theory and Finite Element Method", *IEEE Transactions on Power Delivery*, Vol. 34, No. 5, (2019), 1948-1956. doi: 10.1109/TPWRD.2019.2932669
17. Kumbhar, G. B., and Kulkarni, S. V., "A Directly Coupled Field-Circuit Model of a Transformer to Study Surge Phenomena and for Frequency Response Analysis", 18th National Power Systems Conference (NPSC), India, 2014. doi: 10.1109/NPSC.2014.7103838
18. Liu, S., Li, H., and Lin, F., "Diagnosis of Transformer Winding Faults based on Fem Simulation and On-site Experiments", *IEEE Transactions on Dielectrics and Electrical Insulation* Vol. 23, No. 6, (2016), 3752-3760. doi: 10.1109/TDEI.2016.006008
19. Wan, H., Yang, Q., Li, Y., Wang, J., Yuan, D., Hu, M., "Electromagnetic Characteristic Calculation of Several Parallel Coils for High Current Transformer Based on Field-Circuit Coupling Method", *IEEE Transactions on Applied Superconductivity*, Vol. 29, No. 2, (2019). doi: 10.1109/TASC.2019.2893706
20. Kumbhar, G. B., Kulkarni, S. V., "Analysis of short-circuit performance of split-winding transformer using coupled field-circuit approach", *IEEE Transaction on Power Delivery*, Vol. 22, No. 2, (2007), 936-943. doi: 10.1109/TPWRD.2007.893442.
21. Kumbhar, G. B., Kulkarni, S. V., "Analysis of sympathetic inrush phenomena in transformers using coupled field-circuit approach", *IEEE Power Engineering Society General Meeting*, (2007), 427-432. doi: 10.1109/PES.2007.386128
22. Hosseini, S.M.H., Baravati, P. R., "Transformer Winding Modeling based on Multi-Conductor Transmission Line Model for Partial Discharge Study" *Electrical Engineering and Technology*, Vol. 9, No. 1, (2014), 154-161. doi: 10.5370/JEET.2014.9.1.154
23. Jafari, A.M., Akbari, A., Mirzaei, A., Kharezi, M., Allahbakhshi, M., "Investigating Practical Experiments of Partial Discharge Localization in Transformers using Winding Modeling", *IEEE Transactions on Dielectrics and Electrical Insulation*, Vol. 15, No. 4, (2008), 1174-1182. doi: 10.1109/TDEI.2008.4591240
24. Zhang, P., Wang, Y., Nie, X., Yan, W., Zhang, H., "Transient modeling and analysis of transformer windings under VFOT", 7th World Congress on Intelligent Control and Automation, China, 2008. doi: 10.1109/WCICA.2008.4593306
25. Naderi, M. S., Vakilian, M., Blackburn, T. R., Phung, B. T., Naderi, M. S., Nasiri, A., "A hybrid transformer model for determination of partial discharge location in transformer winding", *IEEE Transactions on Dielectrics and Electrical Insulation*, Vol. 14, No. 2, (2007), 436-443. doi: 10.1109/TDEI.2007.344625
26. Popov, M., van der Sluis, L., Paap, G. C., De Herdt, H., "Computation of very fast transient overvoltages in transformer windings", *IEEE Transactions on Power Delivery*, Vol. 18, No. 4, (2003), 1268-1274. doi: 10.1109/TPWRD.2003.817738
27. Azizian, D., "Windings Temperature Prediction in Split-Winding Traction Transformer", *Turkish Journal of Electrical Engineering and Computer Sciences*, Vol. 24, No. 4, (2016), 3011-3022. doi:10.3906/elk-1403-304
28. Azizian, D., Vakilian, M., Faiz, J., and Bigdeli, M., "Calculating Leakage Inductances of Split-Windings in Dry-Type Traction Transformers", *ECTI Transaction EEC*, Vol. 10, No. 1, (2012), 99-106.
29. Azizian, D., Vakilian, M., and Faiz, J., "A New Multi-Winding Traction Transformer Equivalent Circuit for Short-Circuit Performance Analysis", *International Transaction on Electrical Energy Systems*, Vol. 24, No. 2, (2014), 186-202. doi: 10.1002/etep.1686
30. Azizian, D., "Nonlinear Behaviour Analysis of Split-Winding Dry-Type Transformer Using a New Star Model and a Coupled Field-Circuit Approach", *Archives of Electrical Engineering*, Vol. 65, No. 4, 773-787, 2016. doi: 10.1515/ae-2016-0054
31. Azizian, D., Gharehpetian, G. B., "Split-Winding Transformer Design Using New Hybrid Optimization Algorithm Based on PSO and I-BB-BC", *IET Science, Measurement and Technology*, Vol. 12, No. 6, (2018), 712-718. doi: 10.1049/iet-smt.2017.0118
32. Sobouti, M. A., Azizian, D., Begdeli, M., Gharehpetian, G. B., "Electromagnetic transients modelling of splitwinding traction transformers for frequency response analysis", *IET Science, Measurement and Technology*, Vol. 13, No. 9, (2019). 1362-1371. doi: 10.1049/iet-smt.2019.0164
33. Gharehpetian, G. B., Mohseni, H., Moller, K., " Hybrid modelling of inhomogeneous transformer winding for very fast

- transient overvoltage studies”, *IEEE Transactions on Power Delivery*, Vol. 13, No. 1, (1998), 157-163. doi: 10.1109/61.660873
34. Gunawardana, M., Fattal, F., Kordi, B., “Very Fast Transient Analysis of Transformer Winding Using Axial Multiconductor Transmission Line Theory and Finite Element Method”, *IEEE Transactions on Power Delivery*, (2019), Vol. 34, No. 5.1948-1956. doi: 10.1109/TPWRD.2019.2932669
35. Fouineau, A., Raulet, M., Lefebvre, B., Burais, N., and Sixdenier, F., “Semi-Analytical Methods for Calculation of Leakage Inductance and Frequency-Dependent Resistance of Windings in Transformers”, *IEEE Transaction on Magnetics*, (2018), Vol. 54, No. 10, 1-10. doi: 10.1109/TMAG.2018.2858743
36. Ahour, J., Seyedtabaie, S., Gharehpetian, G. B., “Modified transformer winding ladder network model to assess non-dominant frequencies”, *IET Electric Power Applications*, (2017), Vol. 11, No. 4. 578-585. doi: 10.1049/iet-epa.2016.0635
37. Mombello, E.E., “Impedances for the calculation of electromagnetic transients within transformers”, *IEEE Transactions on Power Delivery*, (2002), Vol. 17, No. 2. 479-488. doi: 10.1109/61.997922
38. IEEE Guide for the Application and Interpretation of Frequency Response Analysis for Oil-Immersed Transformers, IEEE Std C57.149, 2012.

Persian Abstract

چکیده

برای طراحی ترانسفورماتور، مدل سازی ترانسفورماتورهای چندسیم پیچ دوطبقه در حوزه های فرکانسی مختلف، از اهمیت زیادی برخوردار است. در این مقاله، مدل خط انتقال چند سیمه برای مدل سازی فرکانس بالای ترانسفورماتورهای چند سیم پیچ دوطبقه برای اولین بار پیشنهاد شده است. در این مدل، تمام دورها در دیسکها و لایهها در نظر گرفته شده است و پارامترهای مدل توسط روش اجزای محدود محاسبه شده است. به منظور ارزیابی مدل پیشنهادی، نتایج بدست آمده با نتایج مدل اجزای محدود و ترویج میدان- مدار مقایسه شده است. مقایسه نتایج نشان می دهد که مدل معرفی شده از دقت خوبی برخوردار بوده و می تواند برای مدل سازی ترانسفورماتورهای چندسیم پیچ دوطبقه در حوزه های فرکانسی مختلف مورد استفاده قرار گیرد. همچنین با استفاده از مدل خط انتقال چند سیمه تأیید شده، پاسخ فرکانسی ترانسفورماتور چند سیم پیچ دو طبقه و خطای اتصال کوتاه دیسک به دیسک مورد آنالیز قرار گرفته است.
